



SEACOVE APARTMENTS

LUXURY BY THE SHORE

YOUR GATEWAY TO COASTAL LIVING

Discover the perfect blend of luxury, comfort, and sustainability at SeaCove Apartments, your new home in the heart of Shanzu, Mombasa. Nestled just minutes away from the pristine beaches of the Indian Ocean, SeaCove Apartments offer a unique coastal living experience designed for modern lifestyles.

Whether you're looking for a permanent residence, a vacation home, or a smart investment opportunity, SeaCove Apartments has something for everyone.





Architectural Render

WHY CHOOSE SEACOVE APARTMENTS?

At SeaCove, we've redefined coastal living by combining modern design, state-of-the-art amenities, and sustainable practices to create a community that feels like a resort.



Modern, Stylish Spaces

Experience modern, stylish living with smart home tech, premium finishes, and flexible spaces designed for your lifestyle.



Resort-Style Amenities

Live the vacation life daily with a resort-style pool, rooftop terrace, gym, co-working spaces, and world-class amenities.



Sustainable Living

At SeaCove, sustainability meets luxury with solar energy, water-saving fixtures, and lush green spaces for an eco-friendly lifestyle.



A Secure, Gated Community

Your safety comes first with 24/7 security, CCTV, gated access, and on-site personnel for total peace of mind.



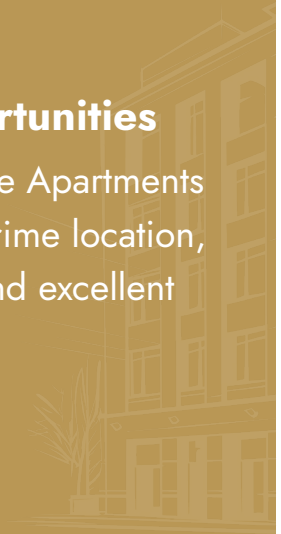
Lifestyle Designed for You

Offers a vibrant lifestyle with community events, concierge services, and exclusive local perks—all by the beach.

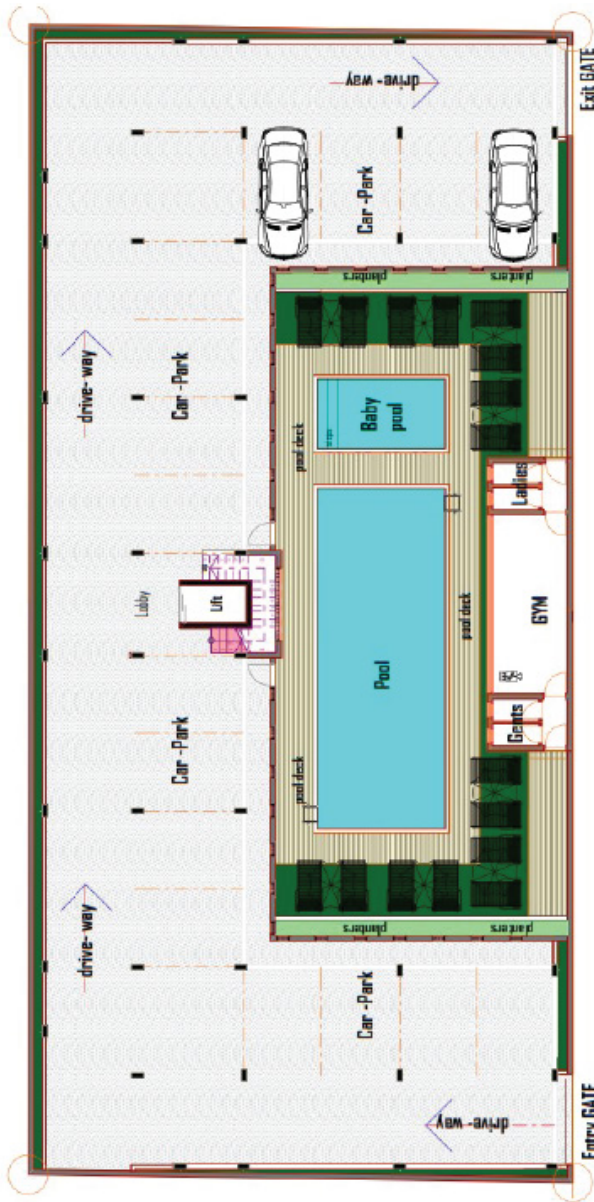


Investment Opportunities

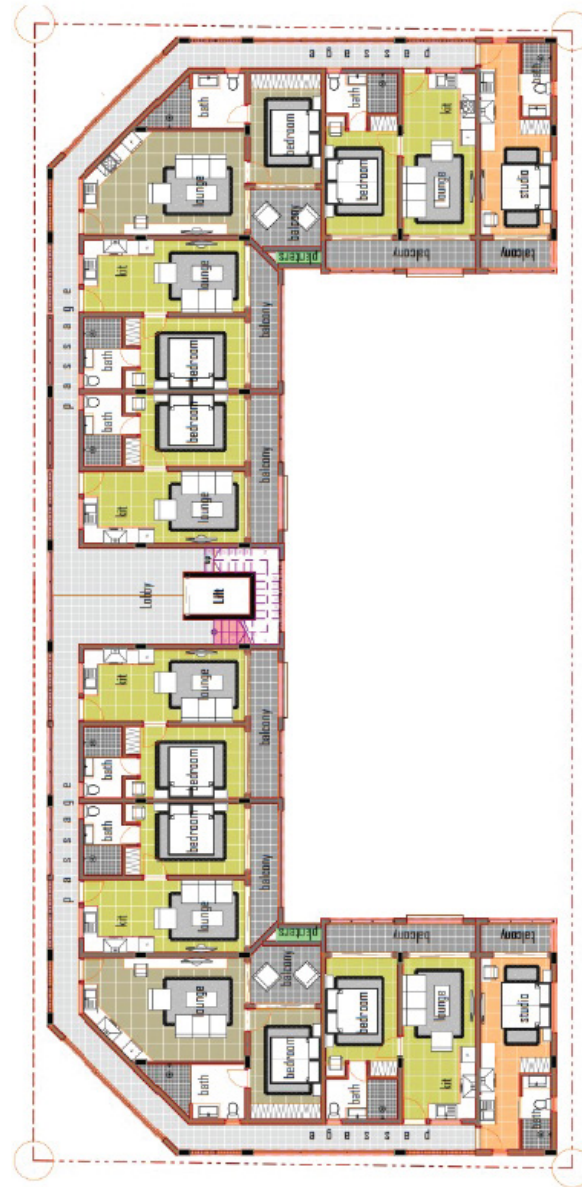
Invest smart with SeaCove Apartments in Shanzu, Mombasa—prime location, high rental demand, and excellent returns.



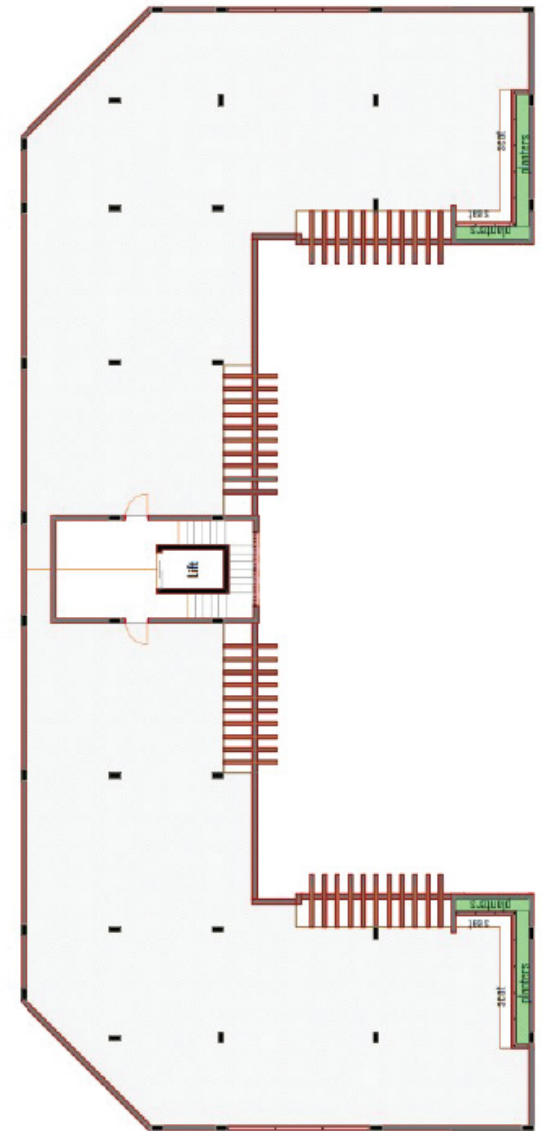
FLOOR PLANS



Site/ground Floor



First to Sixth Floor



Terrace Floor

SEACOVE'S ONE-BEDROOM APARTMENTS

Total Area: From 45 m² to 53 m²

Spacious and functional, these units are ideal for small families or professionals looking for extra space.

- Baths: 1
- Modern open-plan fitted kitchen
- Spacious Balcony
- Car park for 1
- Price: **From KES 6,500,000**



**1 Bedroom Apartment
(Type A)**

Area: 53sqm



**1 Bedroom Apartment
(Type B)**

Area: 45sqm

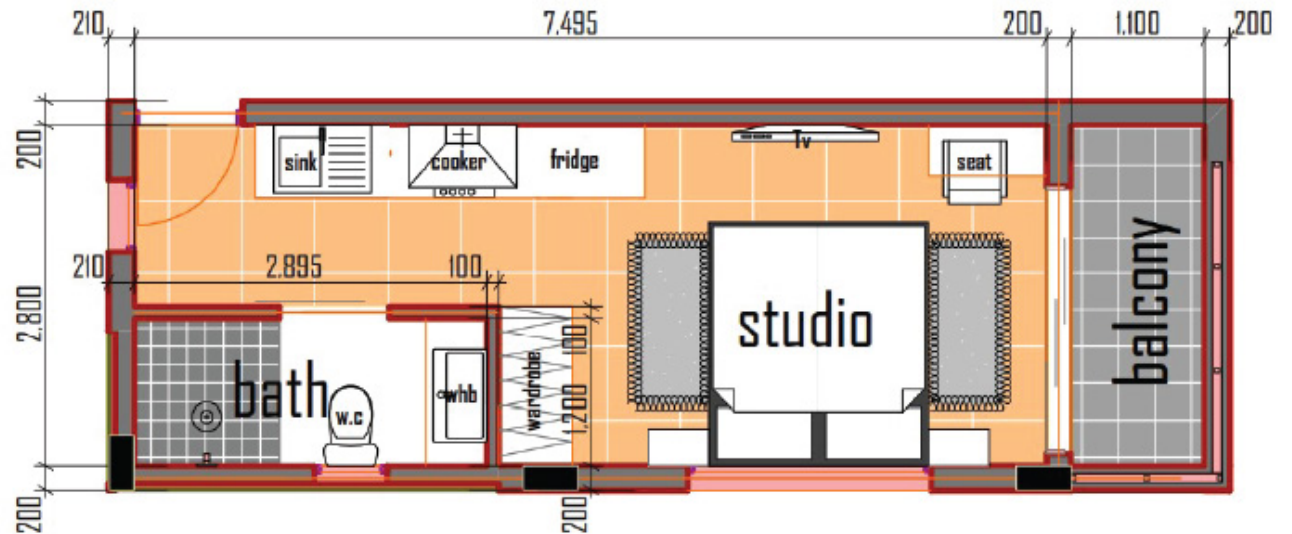


SEACOVE'S STUDIO APARTMENTS

Total Area: 24 m²

Perfect for singles or couples, our studio units are compact yet stylish, offering everything you need for comfortable living.

- Baths: 1
- Modern open-plan fitted kitchen
- Spacious Balcony
- Car park for 1
- Price: **From KES 5,500,000**



Studio Apartment Plan



Architectural Render





AMENITIES

- Smart Home Technology
- Flexible Layouts
- Luxury Pool Area
- Fitness Center
- Rooftop Terrace
- Co-Working Spaces
- Solar Panels
- Water-Saving Fixtures
- Rooftop Gardens
- 24/7 Security
- Cctv Surveillance
- Secure Access Points
- Gated Community
- Concierge Services
- Ample Parking





● Mama Ngina National School

● Ngomongo Villages

● Sunset Paradise Holiday Homes

● The Tavern Inn

● Shanzu Girl Guides Campsite

SeaCove Apartments are located within the same compound as Sunset Paradise Apartments.

LOCATION

- 3 minutes drive to Shanzu Beach
- 4 minutes drive to Serena Beach Resort & Spa
- 5 minutes drive to Mombasa Marine Park & Reserve
- 5 minutes drive to Mombasa Marine Park & Reserve
- 6 minutes drive to Pridelnn Paradise Beach Resort & Spa Mombasa
- 10 minutes drive to Mtwapa Creek
- 10 minutes drive to Bamburi Airport
- 25 minutes drive to Nguuni Nature Sanctuary



Developers
Hayaam Holdings LTD.
P.O BOX 14609-00400 Nairobi

E: hello@seacove.co.ke | W: www.seacove.co.ke

Sales/Bookings: +254 742 490 071 | +254 762 288 999

Hayaam Holdings LTD for themselves and for the vendors of this property whose agents they are, give notice that these particulars do not constitute any part of an offer or a contract nor are these guaranteed to be accurate under any circumstances.